

Stourbridge Glass Museum – how it came into being.

The remarkable tale of the period from the formation of BGF in 2010 to SGM official opening in 2013.

Now available direct from the museum. All proceeds to BGF.

Edition: 252

Dated: 24.9.24

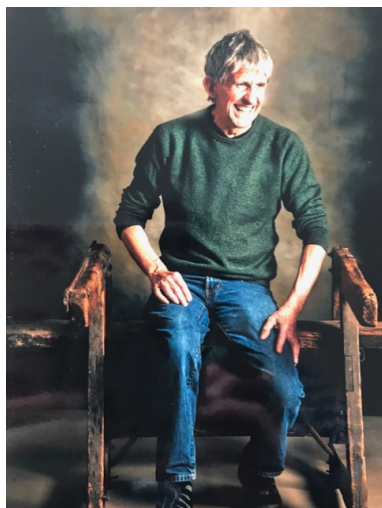
Bye-bye Richard

A tribute to one of our industry's nice guys

'All the world's a stage' declared the Bard in As You Like It. 'And all the men and women merely players'. True enough, and there are those who relish with gusto their life under the bright lights.

But, lest we forget, there are also those ensconced more comfortably behind the scenes seeking no aggrandisement but who nonetheless work tirelessly in resolute support, their reward more usually being the fulfilling recognition of a job well done and often achieved in a cocoon of unashamed modesty. Look close enough and these unsung characters are to be found in every aspect of life, and none more so than in the *Wonderful World of Glass*.^{©GF} Yet our rarefied haven of craftsmanship is about to become the poorer as one of its number decides the time is now right to move into well-earned retirement.

Richard Lamming of Redhouse Glass Crafts, for indeed it is he, is possibly one of the area's most respected and talented representatives that you've never met, but perhaps more likely have otherwise countered in his stunning work. Sadly, this will be no more when he calls it a day (well, almost) at the end of September 2024, so let us celebrate him whilst we may ...



Richard left school aged 16 and started work at Stuart Crystal in Wordsley, where he undertook an apprenticeship. Following its completion, in 1986 he and a colleague Brett Taylor approached their MD, the renowned Roger Pauli, with the idea of starting up a chipped glass repair service. Roger agreed to loan them the necessary equipment and offered them a small workshop which readers may now recognise as The Redhouse Cone Coffee Shop.

The pair became very successful and in 2002 an opportunity arose to relocate to the newly opened Glasshouse Glass College in Amblecote where it was envisaged there would be a greater footfall. Richard and Brett were offered the

opportunity to take students with special educational needs under their wings whereby they provided the students with an opportunity to gain hands-on experience working with glass. In 2011 Brett moved to France, leaving Richard to continue what was, by now, a flourishing business.

His track record is impressive and over almost four decades he has utilised his vast experience and knowledge to cultivate relationships all over the UK. Studio glass makers, crystal manufacturers and antiques dealers are amongst those who seek his services.



Using a perplexing mishmash of vintage cold working glass equipment, wheels and stones that he has accrued and mastered over Lord knows how long, he has also built up a highly specialist niche in making good broken or defective glassware.

He deals with no mean hand and his credits encompass work for many of the Royal households, USA state buildings and other historical buildings closer to home including our own Redhouse Cone, Stourbridge Glass Museum and Himley Hall. There is, of course, his ongoing work with cold-working students eager to imbibe just a fragment of the *maestro's* skills.

Over the past twenty years Richard has assisted many of glass artists prepare their work to be exhibited in the International Festival of Glass Biennales and, more recently, his talents have been both acknowledged and sought by many leading TV antique shows presenters such as Will Farmer, Tim Wilnecote, Andy McConnell and other household names.

In 2012 Richard played a major role in the making of all five items in the 2012 Portland Vase Collection and more recently assisting Terri Colledge transforming what seemed an unusable cameo blank into an interpretation of the Naples (Blue) Vase. If those alone should prove to be his legacy, then his reputation is secured in perpetuity.



Ah but, the announcement of Richard's retirement is not quite the end of the line since he will be calling by his old unit at the Ruskin Centre to smooth the transition for ex-Stuart Crystal glass cutter Nick Gritton, who will be taking the helm. So, perhaps more accurately for now, this should be seen as a 'semi-retirement', during which time Richard intends to support Nick in the creation and development of those jobs that, after all these years, he is still passionate about tackling. Even so, we can only hope Richard might also occasionally glance back and see for himself what a huge hole he is leaving behind.

Bye-bye Richard. On behalf of everyone who has had the privilege to know and to work with you, we wish you, Heather and family many long and happy years together in your easing away from the world of glassworking. An old maxim springs to mind; I can't remember who said it but it fits just perfect here: *'Count your riches by friends, not years.'* By this yardstick alone, Richard Lamming, you are truly a wealthy man.

In memoriam

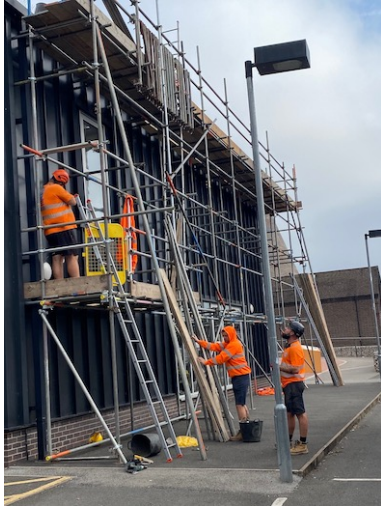
We extend our deepest sympathy to retired master glassmaker Richard Golding and family following the recent death of his mother Jane, just one week shy of her 100th birthday. Richard has made many pieces of glass for her over the years, some engraved with personal messages, and he is offering a selection for sale at a special one-off event at his home on 2nd November. Details [here](#); RSVP.

Hands across Europe

'Our Lynn' (on right) tells us about the roaring good time that was had by all during a recent visit to the museum by a group of Ukrainian visitors who were given The Grand Tour, and the youngsters having a go in the hot glass studio. Nice one.



Here comes the sun



As we speak, the scaffolding is up for solar panels to be fitted on the museum roof. Keep watching for progress on how we are going 'green'.



Lighting up time

We are advised that on Friday 18th October 2024 Red House Glass Cone will be illuminated purple to raise awareness of the hidden condition Developmental Language Disorder (DLD) and to mark International DLD Day. No, we hadn't either, so we took a closer look [here](#) and found out a whole lot more about this distressing ailment and the purpose of the awareness day. DLD is more common than one might imagine, but there is evidently help at hand.

WHAT'S ON AT SGM

Full details of our packed programme of events are contained in our brochure (available free of charge from the Museum and other local outlets) or via the Stourbridge Glass Museum website by clicking here: <https://www.stourbridgeglassmuseum.org.uk/events/>

GIFTS AND DONATIONS

to BGF funds, for which we thank you

Funding and maintaining a revenue stream is an ongoing requirement. We greatly value your contributions. BGF Trustees are unremunerated; all monies received go to the cause. Donations can be as one-off contributions or standing order.

BGF routinely reviews its donation procedures. Enhancements are announced as and when but we currently accept donations direct by cash, cheque and BACS. **We would respectfully ask that all cheques and orders be made payable to BRITISH GLASS FOUNDATION.**



This is the QR code for the British Glass Foundation. Scan to browse the work of the BGF or to make a donation.

For donations by BACS our bank details are:

HSBC Bank
Branch Identifier Code: MIDLGB2108U
Sort code: 40-38-07
Account number: 72076780

To donate via *JustGiving* visit:

<https://donate.justgiving.com/donation-amount?uri=aHR0cHM6Ly9kb25hdGUtYXBpLmp1c3RnaXZpbmcuY29tL2FwaS9kb25hdGlbnMvN2FIMjYTM1NDIhNDUxMik1NzdlODgzOjRiZjZkMDQ=>

To donate *PayPal* visit: <https://www.paypal.com/uk/for-you/transfer-money/send-money> and donate to bgf@britishglassfoundation.org.uk

To donate through our website visit: www.stourbridgeglassmuseum.org.uk and hit the 'Donate' button.

Donations made by a UK taxpayer can attract Gift Aid, which is a great supplement to our funds and costs the donor nothing. All we need to claim this is your Gift Aid declaration; contact us for details if you have not already supplied us with relevant particulars.

Please note: In acknowledging the support of donors *GlassCuts* generally will not reveal either the details of the donor or the amount donated unless the donor indicates otherwise or the circumstances are in the public domain or public interest. This does not preclude the possibility of details, including the amount donated and/or the donor's particulars, appearing elsewhere in BGF material.

In addition to cash BGF is similarly grateful for donations of good quality glass to sell in our shop. All funds raised from the sale of donated glass go into a separate Collections Account towards future acquisitions for the museum. To make a donation directly into the **British Glass Foundation Collections Account** use sort code: **40-38-07** and account number: **52291789**.

Notes and queries

Whilst we are happy to facilitate this *ad hoc* information exchange on unusual items of interest BGF cannot undertake valuations or offer comment other than that supplied by our correspondents. Submission does not guarantee publication. No responsibility ... etc (*usual caveats apply*)

All quiet this time around, although we have been answering some intriguing questions that may lead to some additions to our collections in due course. More to follow, as it occurs.

PARISH NOTICES

tell us the news from your world

Send us yours and we'll try to mention it. No guarantees other than we'll do our best.

- * *Alan J. Poole newsletter* latest edition. alanjpoole@aol.com
- * *Contemporary Glass Society* latest news. www.cgs.org.uk
Monthly *Glass Network Digital* also available.
- * *The Worshipful Company of Glass Sellers of London*. Updates: info@glass-sellers.co.uk
- * *The Glass Society* Events Schedule. <http://glassassociation.org.uk>
- * *Artlight Magazine*. Latest edition; unusual glass features. More [here](#)

From the Hot Studio:

www.allistermalcolm.com **Facebook** @allistermalcolmglass **Twitter** @allistermalcolm **Instagram** @allistermalcolmglassLtd
Follow all that's going on via Allister's feeds.

Keep up with developments down at the studio and his work throughout IFoG via Al's media feeds. His summer 2024 catalogue and latest news is also now available [here](#)

Just a reminder ...

If you've got something 'glassy' to say and you want it said to somebody else, consider sending it to us and we'll do our best to help pass the information via *GlassCuts* or *OffCuts*. Usual address. There's no fee, but if you've got a few bob lying around in a spare pocket we can always find a good use for it.

And finally ...

Don't miss out on our latest fabulous *GlassCuts* offer: the first 5,000 readers to send me just £1 via email transfer will each receive their personal copy of my latest book '*How to make five thousand pounds using only email.*' Give it a go.

And our quiz question for this session is an easy one: '*Name three famous Syrians*' (answers below).

I'm off now for a while. Too hot for a coat where I'm at, so I'll just get my Factor 30 and cotton shirt.

Quiz answers: 1) Botham 2) McKellen 3) Duncan-Smith. *Syr-ians*. Geddit? C'mon, gimme a break.

Graham Fisher MBE FRGS
Trustee, PR & Comms
pp British Glass Foundation
www.britishglassfoundation.org.uk

Volunteering at Stourbridge Glass Museum

Would you like to be part of a vibrant and enthusiastic group of volunteers dedicated to supporting the British Glass Foundation and its work at Stourbridge Glass Museum?

Specialist skills or knowledge are welcome but not essential. We are committed to equal opportunities and full training will be given where necessary. To find out more, contact us via the usual address and we will be delighted to do the rest.

Promotional opportunities

Award-winning *Black Country Radio* and *BCR Xtra* broadcast throughout the Black Country on 102.5 FM and also via DAB and on-line around the world. Part of BCR's remit is to promote local events. If you are organising an event that satisfies the criteria of not-for-profit, charitable or philanthropic and is community orientated then you may be eligible for no-fee promotion.

Go to www.blackcountryradio.co.uk hover over 'Local' and click 'Local Events Guide'. Submit the form you'll find at upper left under '+ Add Event'. Your announcement will then appear on the *Events Guide*. Allow sufficient notice and the event may be 'voiced' and broadcast live on air during daytime broadcasting. Depending on the number of events, yours might be broadcast several times; there's no guarantee but it should appear at least once. Meanwhile it stays on the *Events Guide* listings on the world-wide web until the day itself. And it's all entirely free of charge.

Second time around

GlassCuts is compiled and edited *pro bono* and distributed to its subscribers free of charge. To receive *GlassCuts* contact our Secretary (below). However, if you miss us first time around, or if you are searching for that elusive feature, then all issues of *GlassCuts* right back to number 1 are archived [here](#).

Keeping in touch

BGF Secretary & Business Manager Lynn Boleyn MBE

01384 900447 : bgf@britishglassfoundation.org.uk : Stourbridge Glass Museum, Stuart Works, High Street, Wordsley, West Midlands, DY8 4FB

THE BRITISH GLASS FOUNDATION GRATEFULLY ACKNOWLEDGES THE SUPPORT GIVEN BY THE EUROPEAN REGIONAL DEVELOPMENT FUND AND THE HERITAGE LOTTERY FUND



EUROPEAN UNION
Investing in Your Future
European Regional
Development Fund 2007-13



Made possible with

Heritage
Fund

... also Dudley MBC, Fieldings Auctioneers, Enover Community Trust, Ibstock Enover Trust, Clive Richards Foundation



BGF would also like to acknowledge the following, *inter alia*, for their support and generosity ...

Black Country Local Enterprise Partnership Growing Places Fund : Garfield Weston : Edward Cadbury Charitable Trust : The Headley Trust : The Charles Hayward Foundation : W.A. Cadbury Charitable Trust : John Ellerman Foundation : The Worshipful Company of Glass Sellers of London : The Pilgrim Trust : FCC Communities Foundation ... plus many contributions from other trusts, foundations and individuals. (E&OE)

Full details of BGF partners, supporters and sponsors at: www.britishglassfoundation.org.uk/the-foundation/

Follow us ...



<https://m.facebook.com/GlassMuseumUK/>



<https://twitter.com/glassmuseumuk>

Instagram

<https://www.instagram.com/glassmuseumuk/>

Disclaimer ...

We comply with the provisions of Data Protection and so we must remind you that *GlassCuts* exists solely for the information of its supporters and is distributed only to those who consent (as defined by GDPR) to being on our database in order to receive it or other relevant information. Whilst every reasonable care is taken in editing *GlassCuts* and its subsidiary bulletins, no liability can be taken or assumed for content or veracity of information arising from external sources.

Our full Privacy Statement is at www.britishglassfoundation.org.uk or can be supplied by us on request. Subscribers can withdraw at any time simply by sending an email to the bgf address below with 'stop' in the subject header. No responsibility etc. etc ... (usual caveats apply)

We welcome you passing *GlassCuts* on to anyone you feel may be interested in our work. You know the rest but if in any doubt then please communicate with us directly in the first instance via bgf@britishglassfoundation.org.uk



British Glass Foundation

www.britishglassfoundation.org.uk

Registered Charity No 1139252 / Registered Company No 7344291